

UNIVERGE SV9100 IPDECT With InDECT



The Smart Enterprise

Contents

IPDECT Overview

InDECT Overview

Access Points

Licensing

DAP Controller / Manager

IPDECT Handset Overview

Software Assurance



SV9100 IPDECT

This presentation will give an overview of IPDECT for the SV9100.

Presentations on BusinessNet:

DECT Product Area

<http://businessnet.nec-enterprise.com/Products/Terminals-Handsets/DECT-IP-DECT/ProductDocuments/Brochure-NEC-IP-DECT-Mobility-DECT-phones-eng.pdf>

[businessnet.nec-enterprise.com/Products/Wireless/DECT-IP-DECT/ProductDocuments/IP_DECT AP400 R6.6 release overview.pdf](http://businessnet.nec-enterprise.com/Products/Wireless/DECT-IP-DECT/ProductDocuments/IP_DECT_AP400_R6.6_release_overview.pdf)



InDECT

InDECT allows the easy installation, deployment and maintenance of an IP DECT system, NEC's InDECT is a toolset that is fully integrated in the UNIVERGE SV9100 and SL2100 communication servers.

- No additional IT servers are required.
- InDECT minimises installation effort by retrieving PBX settings like regional settings, tone plan, SIP settings etc.

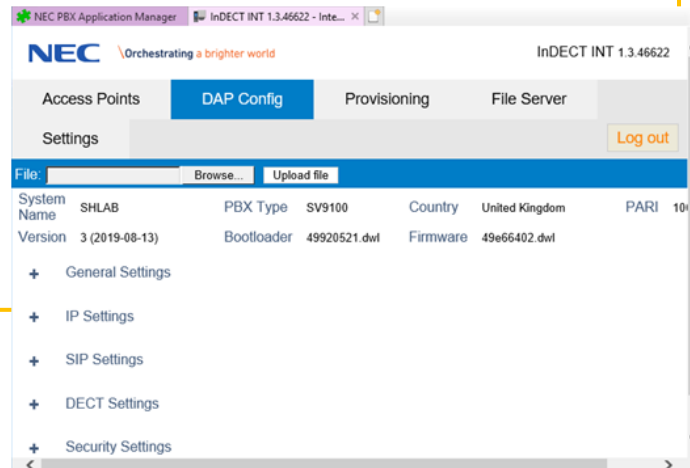
The user interface of InDECT consists of web pages that can be accessed by means of a web browser, not requiring any dedicated PC configurator tool for installing or upgrading a system.

InDECT brings installation of an IP DECT system down to a few crucial steps while it still offers flexibility to tweak the system on many details. InDECT offers a web interface for new system creation, adaptation and maintenance.

The following documentation has been updated and uploaded on the IPDECT area of BusinessNet:

<http://businessnet.nec-enterprise.com/Products/Wireless/DECT-IP-DECT/Pages/Home.aspx>

- InDECT Information Sheet
- InDECT Quick Setup Guide
- InDECT Additional Information Manual
- InDECT Sales Presentation





InDECT

InDECT

- Makes IP DECT an integral part of SL2100/SV9100
- Easy Installation
- Opens way to offer small DECT starter package (bundle available)
- Based on IP DECT Lite – 64 handsets, 32 AP400 (any type)
- Voice only solution (**no messaging**)
- Works with standard DHCP service
- Files are stored in the PBX (InDECT)

An InDECT configuration cannot be adapted by the DAP (Lite) Configurator
The M166 cannot be subscribed in an InDECT system

SV9100 Versions

PBX system	Main Software
SV9100	R8.50.50

SV9100 System Licenses

PBX system	Part Number	Description
SV9100	BE118719	SV9100 INDECT MANAGEMENT LIC

UNIVERGE SV9100 – IPDECT Overview



IPDECT Overview

Multi-cell DECT system with a range of high quality handsets.

Choice of DAP Lite or Full DAP controller modes. Scalable up to 256 Access Points. Access Points connect directly into the IP Network.

Integrated handset features using ISIP protocol to provide programmable Function Keys, Soft Keys and system features on selected handsets.

Can be included within the Software Assurance program for ongoing upgrades.

Key benefits

- Secure communication with dedicated DECT encryption
- Messaging application (DMML)
- Up to 512 handsets
- DAP Lite does not require any PC/Server on site



G577

G577h

G277

IPDECT Overview

	SV9100
Platform Requirements	IPLE card required SIP Extension licenses for handsets
DAP	AP300A/C/E & AP400C/E max = 256 AP400S max = 10
DECT Handsets	Max = 512
DAP Lite Management	Single site only Maximum 32 DAPs & 64 handsets
DAP Controller	Scalable DMLS Messaging and Location available Licensing available with IPDECT R6
IPDECT Licensed mode	Available with DAP Controller

IPDECT Access Points

DAP Controller Software: R6.41

(Also compatible with AP200 & AP300)

- **AP400S**
 - Max 10 DAPs (requires IPDECT V6.21)
 - Max 100 handsets
 - 12 voice channels
 - No Compression (G.729 not available)
- **AP400C**
 - Max 256 DAPs
 - Max 512 handsets
 - 12 voice channels
 - No Compression (G.729 not available)
 - DMLS – Messaging & Location
- **AP400/400E**
 - Max 750 DAPs (requires large configuration license above 256)
 - Unlimited handsets (Note – SV9100 has a limit of 512 handsets)
 - 12 voice channels
 - Compression available (G.729) with optional G7A card
 - External/Directional Antenna (AP400E)
 - DMLS – Messaging & Location

DAP	SV9100
AP400S	10
AP400C	256
AP400/400E	750



DECT Access Point Capacities

SV9100

	SV9100							
	DAP Lite Management				DAP Controller			
	AP400S	AP400C	AP400	AP400E	AP400S	AP400C	AP400	AP400E
Maximum no. of access points	10	32	32	32	10	256	256	256
Maximum no. of handsets	64	64	64	64	64	512	512	512

With InDECT Management

	SV9100			
	InDECT Management			
	AP400S	AP400C	AP400	AP400E
Maximum no. of access points	10	32	32	32
Maximum no. of handsets	64	64	64	64

IPDECT Licensing Overview

With R6 DAP Controller software new licensed features are optional.

Existing license from R5 for Messaging is maintained in R6.

The DAP Manager Software is installed in either 'Non-Licensed mode' or 'Licensed mode'.

Certain new licenses are scalable, based on the quantity of Access Points, and assigned via LMS.

	Non-License mode	License mode
Access Points	AP400S* / AP400C / AP400	AP400C / AP400
DMLS	site-wide license (Existing R5 licenses)	Scalable licenses (require Access Point Capacity license)
Features	Not available	site-wide licenses (Redundancy, I755x, Survivability)
Software Upgrades	Free of charge (no new features)	Scalable license (includes new features)
LMS	Not required	Required
Access Point Capacity License	Not required	Required
HD Voice	Available in R6.20 DAP	Available in R6.20 DAP

* The AP400S can only be installed in 'Non-License mode'

IPDECT DAP Controller/Manager

DAP Manager software is available in two variants:

- DAP Lite Manager
- DAP Manager

Both variants support Non-Licensed and Licensed modes

- **DAP Lite Manager**

- PC Based IP DECT administration software

- Maximum 32 DAPs

- Maximum 64 handsets

- No need to have a PC permanently on site (PC required during installation)

- WEB browser on the DAP for moves and changes & adding new handsets

- Not possible to add new DAP via the browser – PC with DAP Lite Manager is required for this

- **DAP Manager**

- PC Based IP DECT administration software

- No limitation on handsets or DAP quantities

- Requires the PC to be on site for moves and changes or adding a new handset or DAP

- DMLS available

IPDECT Handset Overview

FEATURE OVERVIEW FOR BUSINESS MOBILITY



Call handling features*	G277	G577 / G577h	I766 / I766Ex	M166 Communicator
- Auto answer	✓	✓	✓	✓
- Calling name display	✓	✓	✓	-
- Calling line (CLIP) display / digits	✓ / 24	✓ / 24	✓ / 24	- / -
- Call logging / size	✓ / 50	✓ / 50	✓ / 50	- / -
CAT-iq – HD audio	✓	✓	✓	✓
Charger / multi-charger rack (handsets)	Dual / ✓ (6)	Dual / ✓ (6)	Dual / ✓ (6)	✓ / wall charger
Standby time	Up to 160 hours	Up to 160 hours	Up to 160 hours	Up to 80 hours
Talk time	Up to 20 hours	Up to 20 hours	Up to 16 hours	Up to 3 hours
Display	Colour, 128x160, 1.77"	Colour, 240x320, 2"	Colour, 240x320, 2.4"	-
Headset (connector/Bluetooth)	USB-C (analogue) / -	USB-C (analogue) / ✓	3.5 mm (I766 only) / ✓	2.5 mm / -
IP-class	IP40	IP65	IP65	IP65
IECEx (ATEX)	-	-	Ex version	-
Location detection: RSSI / beacon	✓ / -	✓ / -	✓ / with DLA (I766**)	✓ / with DLA (M166CL)
Man down alarm / Pull cord alarm	- / -	- / -	✓ / ✓	- / ✓
Messaging / SOS button	- / -	✓ / ✓	✓ / ✓	✓ *** / ✓
Multi-line / Programmable keys	- / -	✓ / 4 keys	✓ / 4 keys	-
Memory card for handset settings	MicroSD	MicroSD	MicroSD	-
Personal / Central directory	200 / ✓	200 / ✓	200 / ✓	- / -
Software download over the air	✓	✓	✓	✓
Speakerphone / HD quality	✓ / -	✓ / ✓	✓ / ✓	✓ / -
Trembler alarm	✓	✓	✓	✓
Antibacterial provisions	-	G577h	-	-
ISIP	-	✓	✓	-

DECT Handset – SIP Extension Licenses

Each IP DECT handset will require a SIP Extension license on the SV9100

Standard SIP extension licenses are required for each handset (M166/I766/Gx66/x77 etc)

SV9100 = EU909001 (SV9100 NEC STD SIP IP PHONE01 LIC)

ISIP support is available for the G566/577, I766 and will require selection within the DAP Manager and the SV9100 ISIP license for each handset.

SV9100 = BE114497 (SV9100 IP PHONE DT-01 LIC)

The SV9100 license requires either EU909001 or BE114497, not both.

Note – ISIP selection within the DAP Manager will be required for all IPDECT handsets of each type, refer to the IPDECT documentation for details.

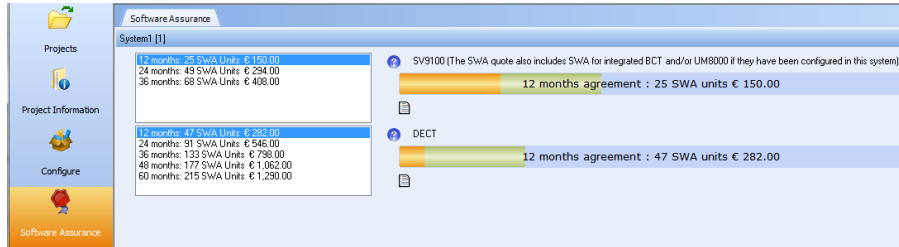
SV9100 Software Assurance

- The SV9100 has optional Software Assurance (SWA) which will include IPDECT when in non-licensed mode.
 - Non-licensed IPDECT systems are included within the SWA for the SV9100
 - DMLS is a site wide license
- If IPDECT runs in licensed mode (DMLS, Large systems... etc) the customer can choose to purchase SWA for the IPDECT system.
 - Licensed IPDECT systems are not included within the SWA for the SV9100, customers have the option to purchase SWA for the IPDECT system
 - DMLS is a scalable license based on the quantity of Access points installed
 - AP400S Access point is not supported within a licensed IPDECT system
 - DAP Lite management is not supported

IPDECT within Prophix

- Choose licensed or non-licensed mode
- Choose to add SWA for licensed mode

The Software Assurance screen will show the different SWA for the SV9100 and the IPDECT system





\Orchestrating a brighter world

NEC brings together and integrates technology and expertise to create the ICT-enabled society of tomorrow.

We collaborate closely with partners and customers around the world, orchestrating each project to ensure all its parts are fine-tuned to local needs.

Every day, our innovative solutions for society contribute to greater safety, security, efficiency and equality, and enable people to live brighter lives.